



**CompuTec**

Manufacturing  
& Logistics for  
**SAP** Business One

# Built for Your Industry



Food & Beverage



Agribusiness



Life Sciences



Chemicals



Consumer Products



Logistics  
& Distribution



Industrial Manufacturing  
& Components



Mill Products



Automotive, Aerospace  
& Defence



Co-manufacturing  
& Co-packing



# A Unified Core for a Connected Enterprise

Competitiveness starts with a single version of the truth. In many businesses, the office and the factory floor operate in separate worlds, leading to errors, and missed opportunities.

The CompuTec Solution Suite connects these two worlds together. By extending SAP Business One, we remove the departmental silos and create a single cohesive system where information flows instantly between every department.

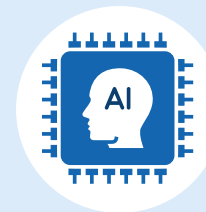
## The Strategic Foundation

**Data Integrity:** Eliminate islands of information by centralizing production and logistics data within your ERP system.

**Operational Agility:** Respond faster to market changes with an integrated system that connects your supply chain to your shop floor.

**Enterprise Innovation:** Digital enablers that scale with your business to support growth.

## Digital Enablers:



AI Capabilities (MCP Server)



Cloud or On-Premise Deployment



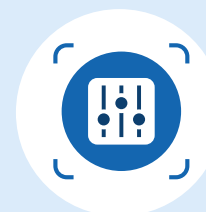
Analytics



Mobile Technologies



Extensibility

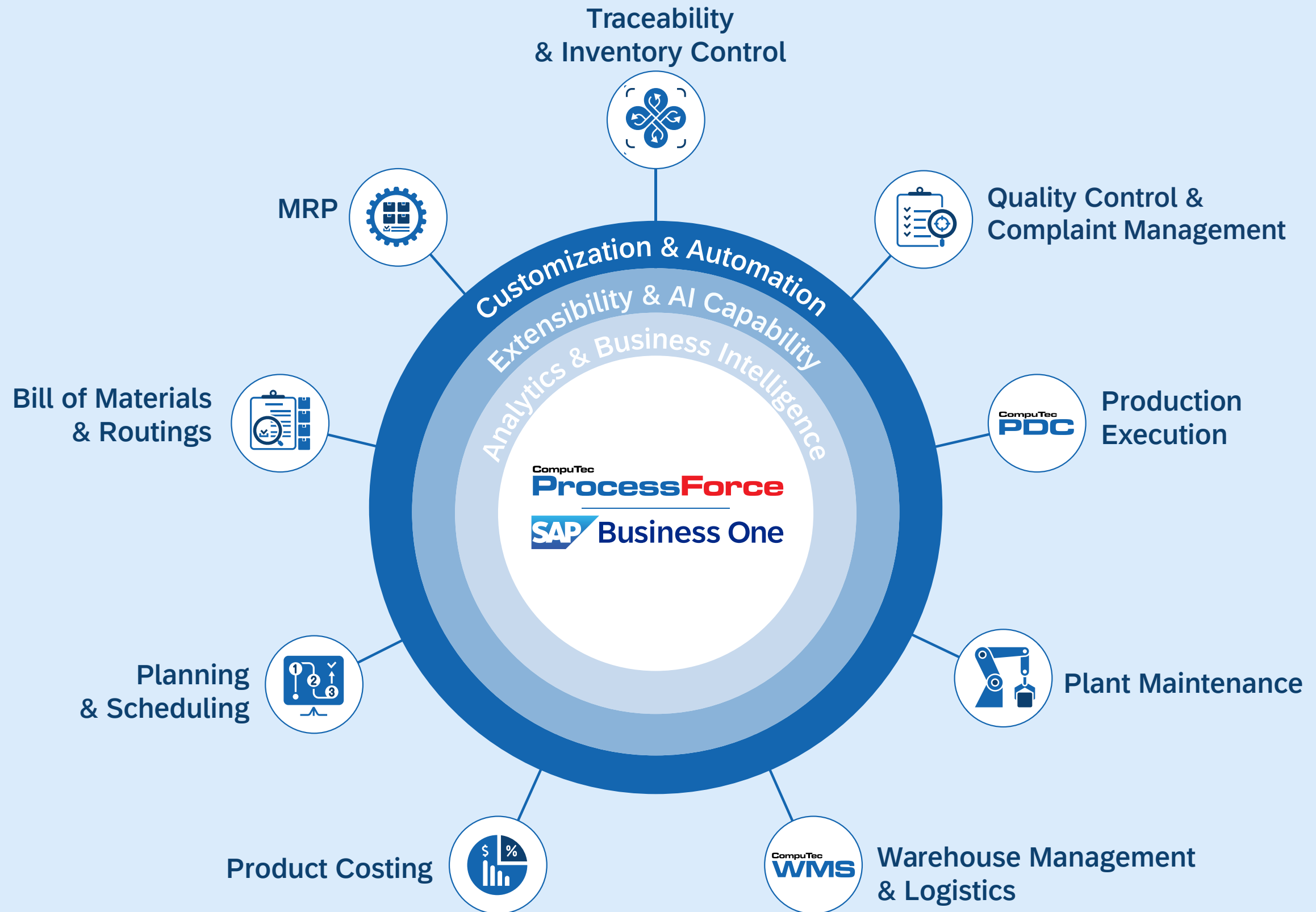


Customization



# Connected Capabilities

Total control over your manufacturing and logistics landscape in one integrated environment.



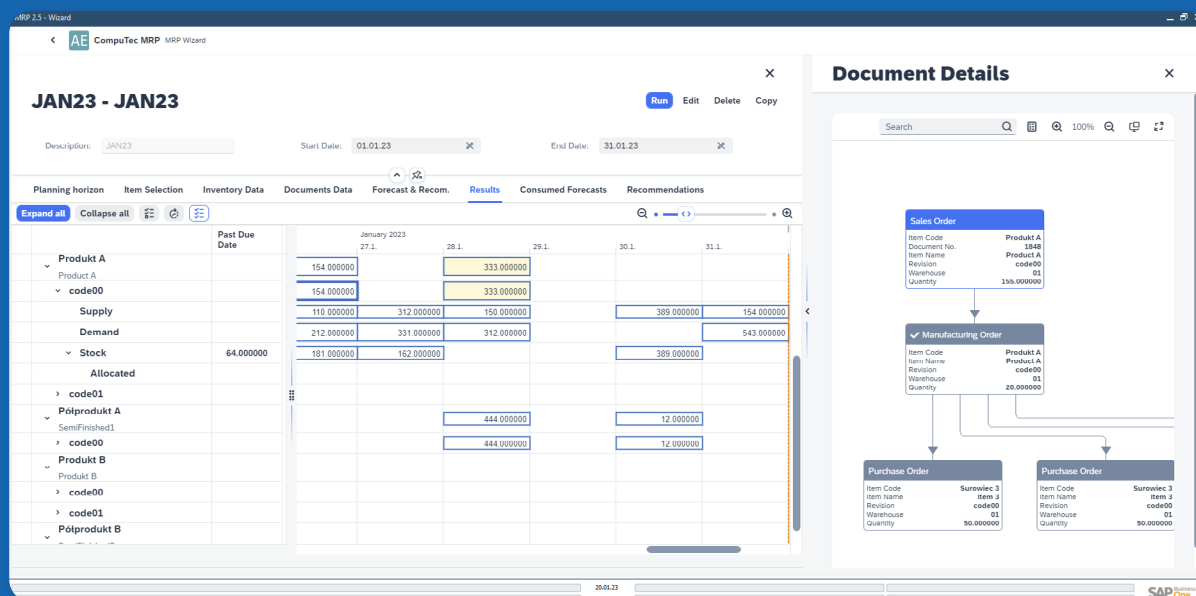
# Intelligent MRP Engine

*Strategic planning to free up working capital and ensure inventory availability.*

**Precise Timing:** Account for internal, external and cumulative lead times to ensure materials arrive exactly when production begins.

**Quality-First Planning:** Factor in Bill of Material revisions, expiry dates, and batch statuses to reduce waste and prevent the use of non-compliant inventory.

**Demand Intelligence:** Use forecast consumption logic and multi-level pegging to balance supply and demand across the supply chain.



## Strategic Outcomes:



Minimize Working Capital Tie-up



Reliable Customer Promises



Reduce Inventory Obsolescence



Safeguard Inventory Availability

# Visual Planning & Scheduling

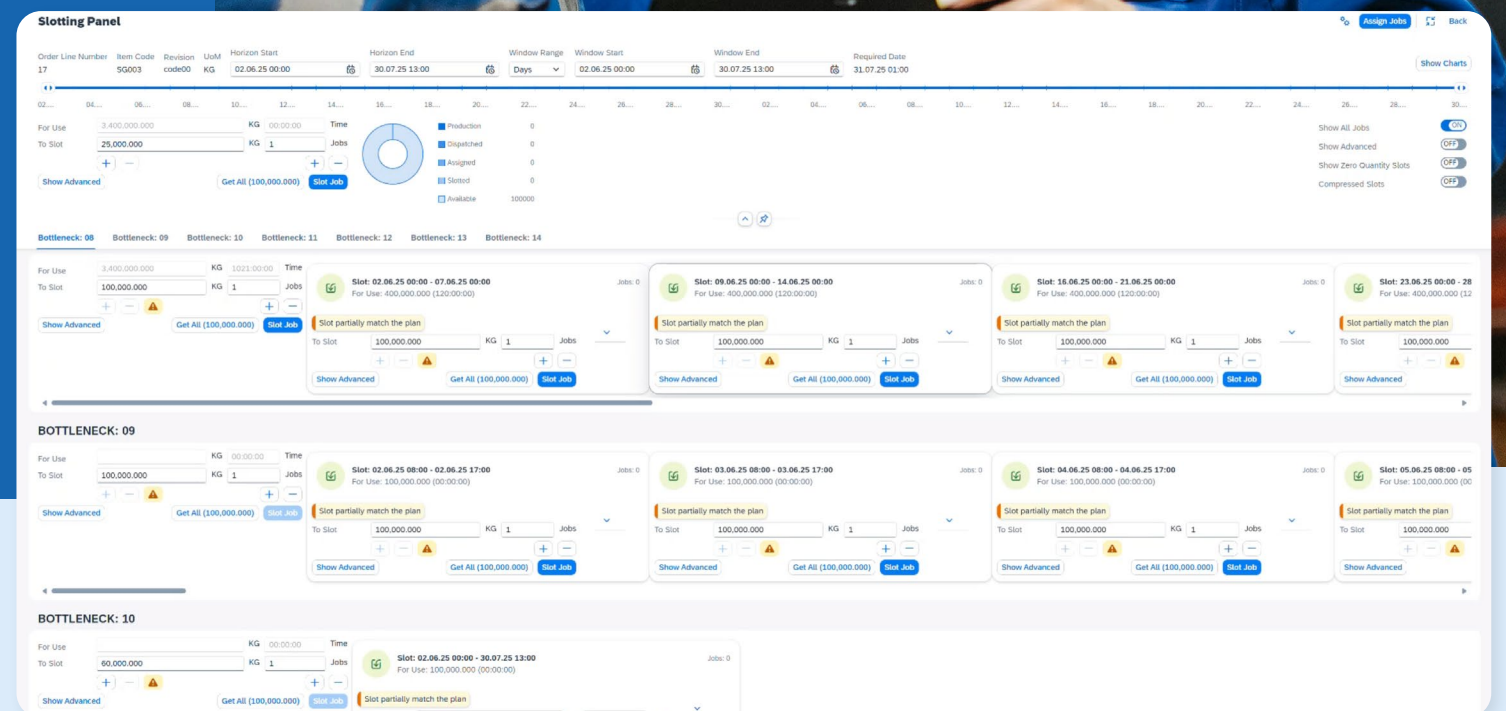
*Build a balanced production schedule and minimize idle time.*

**Drag-and-Drop Agility:** Re-prioritize orders on a visual Gantt chart with instant system-wide updates.

**Automated Optimization:** Use forward, backward and alternative resource heuristics to find the most efficient production path.

**Material Shortage Tracking:** See material shortages and their expected delivery dates.

**Constraint Control:** Identify and manage bottlenecks and use visual multi-level pegging to see how changes impact final delivery dates.



## Strategic Outcomes:



Protected Profit Margins



Increased Capacity Throughput



Increase Delivery Reliability



# Bill of Materials & Routings

Achieve operational consistency and production agility by accurately defining product structures and the production process

**Bill of Materials:** Manage formulas, multi-level BOMS and BOM revisions with ease. Account for co-products, by-products and WIP items to reflect your production material flow.

**Optimized Routings:** Map every step of your production process with defined operations and resources, including queue, setup and run times.



0002 - Add & Update & Remove Item and Update Default Resource

Change Scope - BOMs Items and Resources

Selected BOMs: Items Routings Operations Resources Proposed Changes

Filter BOMs: All  Display only changes

Bill of Material	Type	Action	Location	Code	Description	Resource Type	Sequence	Operation Sequence	Revision	Factor	Factor Description	Formula	Issue Type
Product B rev14	Items	Add											
		No Action		00000002	Bottle-02		10		code00	1.0000		=U_Quantity()*U_Factor()*Items_U_Factor(10)*Item	Backflush
		Change		00000002	Label-01		20		code00	1.0000		=U_Quantity()*U_Factor()*Items_U_Factor(20)	Backflush
		No Action		00000002	Top-02		30		code00	1.0000		=U_Quantity()*U_Factor()*Items_U_Factor(30)*Item	Backflush
		No Action		00000002	Recipe-02		40		code00	1.0000		=U_Quantity()*U_Factor()*Items_U_Factor(40)*Item	Manual
		Add			Raw Material Standard		70		code00	1.0000		=U_Quantity()*U_Factor()*Items_U_Factor(70)	Backflush
		Remove		RSM076			60		code00	0.0000			
	CoProducts												
	Scraps												
	Routings												
	Operations												
	Resources												
		Change	Routing: 03 Operation: 02 Sequence: 10	00000002		Machine							Manual
		Change	Routing: 03 Operation: 02 Sequence: 10	00000002		Machine							Manual

**Global Data Management:** Mass BOM Update tool to implement changes across your entire product range ensuring your production data and costs are up to date.

**Scrap & Yield Logic:** Factor in planned scrap and yield percentages to reflect production losses and gains.

Strategic Outcomes



Increase Batch Consistency



Minimize Operational Risk



Maximize Material Yield



Foundation for Accurate Costing

# Product Costing

*Total financial visibility & accurate margin analysis.*

**Multi-Factor Costing:** Automatically aggregate costs for materials, machines, labor, and subcontracting.

**Overhead Allocation:** Gain a granular view of your expenses by applying fixed and variable overheads.

**Flexible Valuation Models:** Support for Actual, Moving Average, and Standard Costing, giving you the flexibility to value inventory according to a variety of accounting standards.

**Automated Cost Roll-ups:** Calculate the impact of price fluctuations with cost roll-up and roll-over functionality.

**Strategic Cost Modeling:** Forecast the impact of market shifts and investment before they happen with Cost Categories.

## Strategic Outcomes:



Data-Driven Pricing Strategy



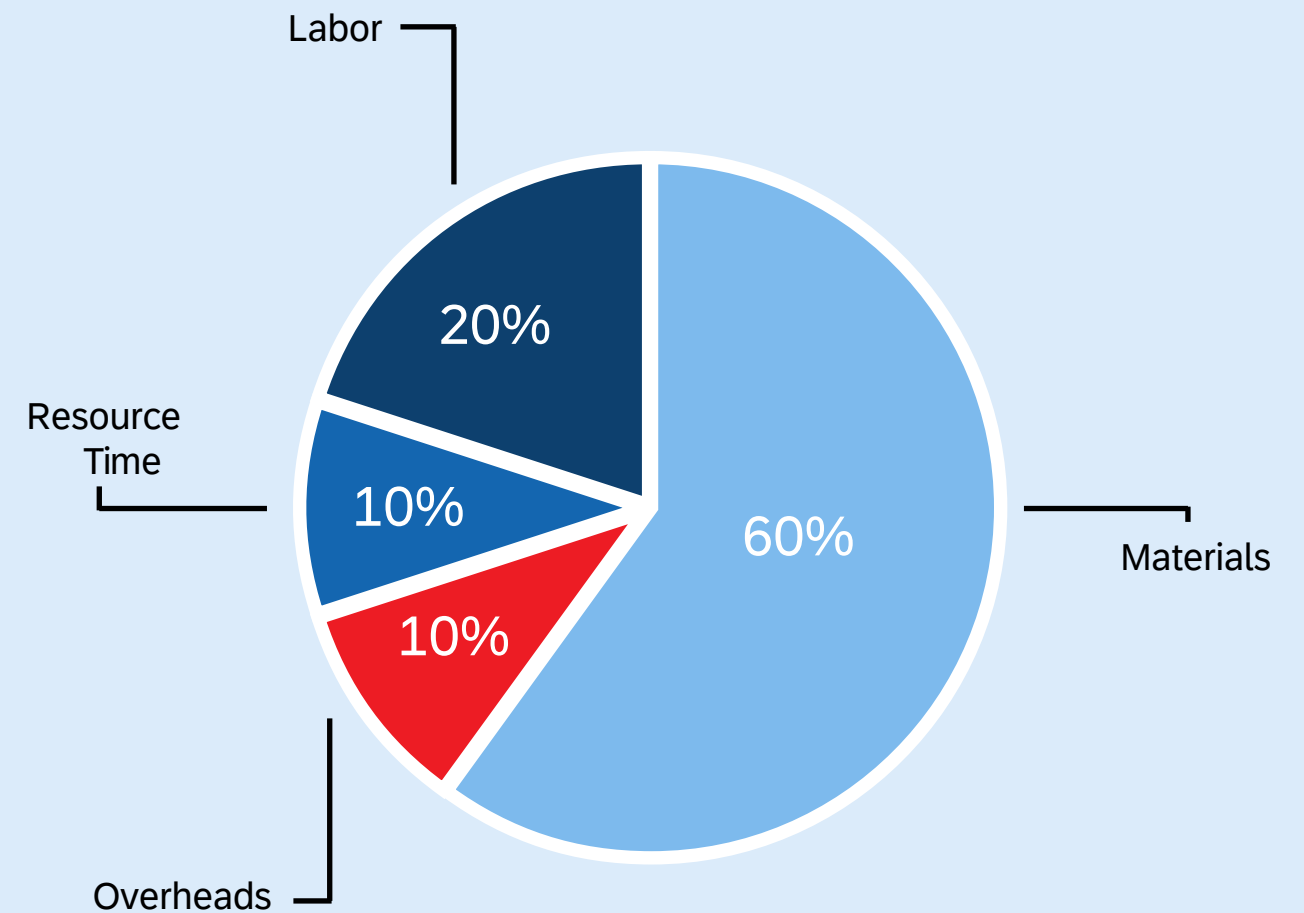
Understand Profit Margins



Deep Financial Visibility



Rapid Financial Closing



# Traceability & Inventory Control

Total transparency, regulatory compliance & risk mitigation.

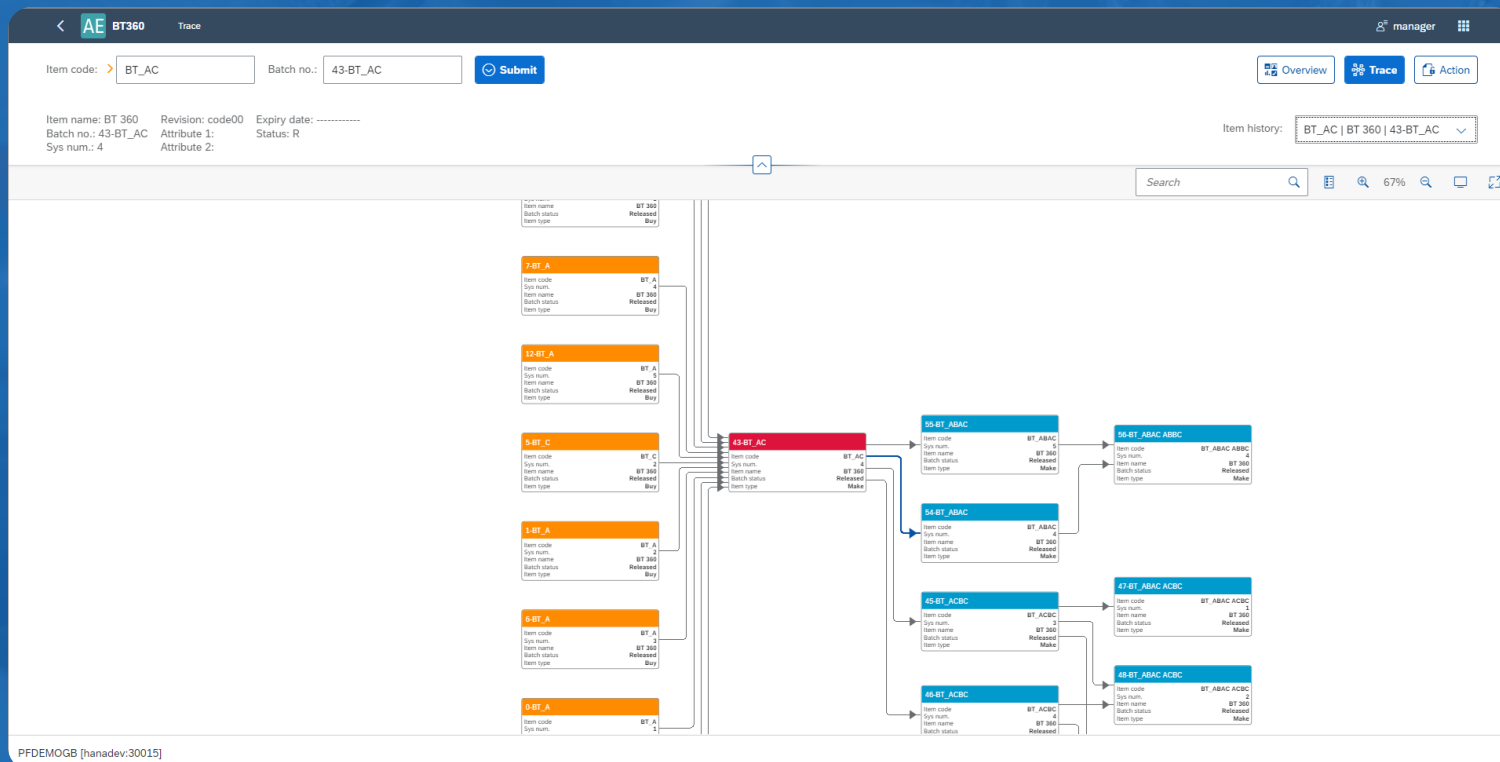
## Regulatory Compliance for Audits

**Granular Identification:** Inventory management by Batch, Serial Number or Serialized Batches.

**Traceability & Analytics:** 360-degree visual traceability, comprehensive batch-related document overview and transaction-based batch investigations.

**Audits & Recalls:** Audit trail of all transactions and location movements for traceable materials.

**Shelf-Life Management:** Enforce warehouse logic with FIFO, FEFO, FMFO, expiry date control and shelf-life management to eliminate waste and ensure product freshness.



## Strategic Outcomes

- Address Industry Legislation
- Limit Recall Scopes
- Electronic Audit Trails
- Reduce Inventory Waste



# Integrated Quality & Complaint Management

Maintain a continuous state of compliance with industry standards.

## Supply Chain Compliance

**Flexible, End-to-End Quality Control:** Inbound, In-Process & Outbound.

**Tailored Quality Gates:** Ensure only approved materials are used. The system enforces testing protocols and restricts the use of materials that fail to meet your standards.

**Mobile Quality Control Execution:** Empower your inspectors with a dedicated mobile application. Perform Inbound and Production QC testing directly on the shop floor with real-time data entry.

**Automated Quality Reporting:** Including Non-Conforming Materials Reports (NCMR).

**Complaint Management:** Efficiently manage customer complaints for both returned and non-returned products, linking them directly back to the production record to identify root causes.

## Strategic Outcomes:



Minimalize Manual Errors



Reduce Cost of Poor Quality



Improve Regulatory Compliance



Accelerate Root-Cause Analysis

AE My List  
Tests List > 12 > Item > 3  
Item Property 3  
07 / Colour  
QC Test / Test Protocol  
Property Recording  
07 / Colour  
Reference: \*  
00000007 x  
Value:  
0.000  
Add Multiple Transfer the aver.  
Reason:  
Remarks:  
Show Multiple (3) Add Cancel  
Property Test Results Recording  
Update or add property recording  
My List All Tests Back



# Production Execution with CompuTec Production Data Capture (PDC)

*Empower your operators and engineers to capture production data in real-time.*

## Increase shop floor data accuracy

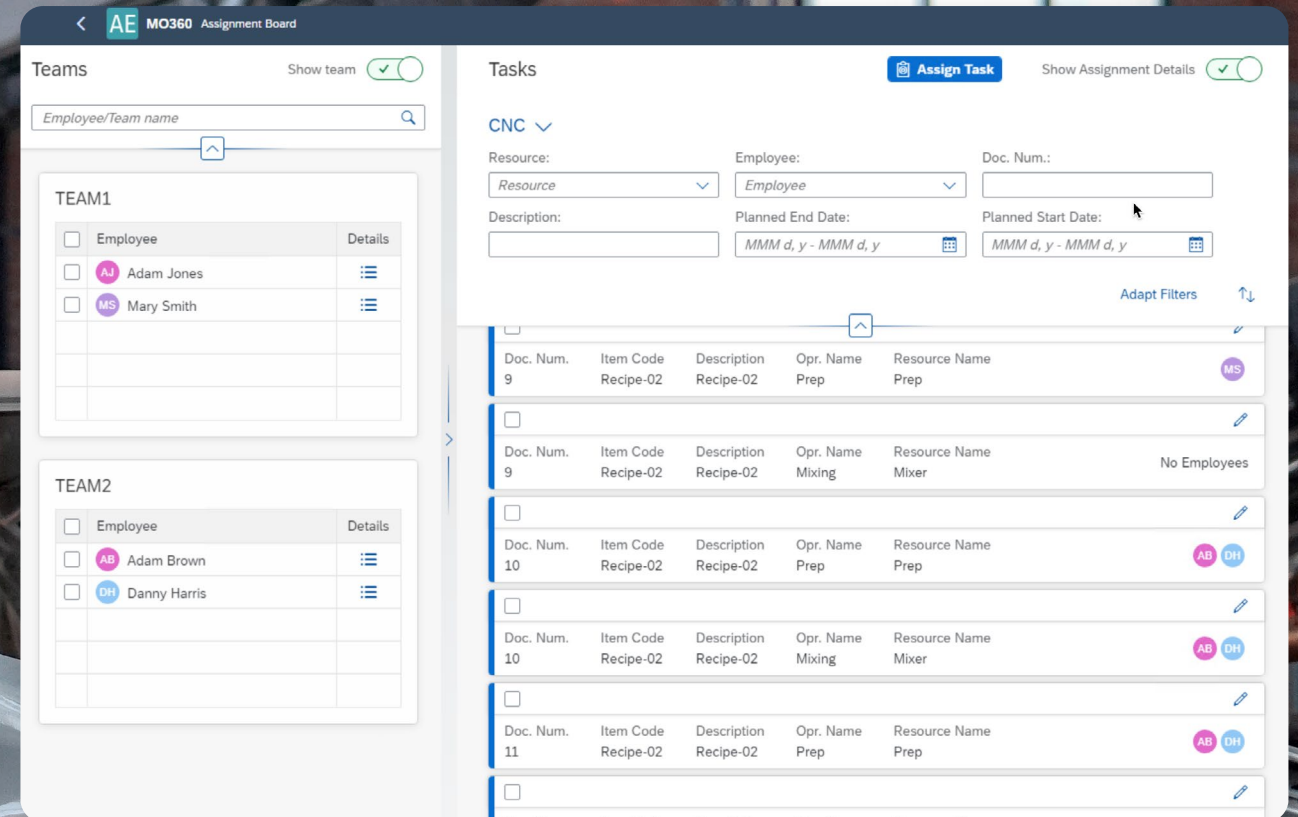
**Manufacturing Order Management:** Order-based, orderless, and multi-level production trees with flexible, order-dependent recipes.

**Operator POD & Dispatch:** Streamline the shop floor with a dedicated Production Operator Dashboard (POD). Dispatch orders and allocate labor with a single click, providing operators with clear, digital instructions.

**Weigh & Dispensing:** Ensure formula precision with integrated Weigh and Dispense protocols, reducing material waste and improving batch consistency.

**Real-Time Labor Tracking:** Capture labor time bookings. Link specific operators to specific tasks for accurate performance, quality and costs.

**Production Order WIP Visualization:** Monitor your Work-in-Process (WIP) in real-time. Build your own Dashboards & Analytics to understand what is happening on the shop floor.



## Strategic Outcomes

- Real-time Shop Floor Visibility
- Increase Data Accuracy
- Improve Production Traceability
- Paperless Production Environment

# Preventative Plant Maintenance

*Synchronize your production tasks with machine availability to increase productivity and efficiency.*

MO List > 22

## Maintenance Order

22 | Readmission procedure

Go Adapt Filters

^

**Maintenance Order** ☆

MO Number/Template  
22 | Readmission procedure

MI Agitator 01 | Agitator

Scope Approval after renovation

Done No

Add attachment >  
Add attachment to current document

Take photo >  
Quickly save photo in a document

Show attachments >

My List ALL MO Back

Details for current document

## Increase Asset Life & Product Quality

**Comprehensive Asset Modeling:** Organize your equipment into a structured asset model, tracking history, documentation, and technical specifications for every machine.

**Optimized Maintenance Orders:** Coordinate preventive and corrective maintenance with the production team. Ensure your assets are always ready for the next planned production run.

**Mobile Execution for Engineers:** Keep your maintenance team mobile. Engineers use a dedicated mobile application to receive work orders, log repairs, and update asset status directly at the machine.

## Strategic Outcomes

- Minimize Unplanned Downtime
- Reduce Maintenance Costs
- Extend Asset Lifespan
- Transparency & Accountability

# Warehouse Management & Logistics

Manage the movement of inventory through the warehouse and production. Automate labeling, enforce global standards such as GS1, and increase inventory accuracy in real-time.

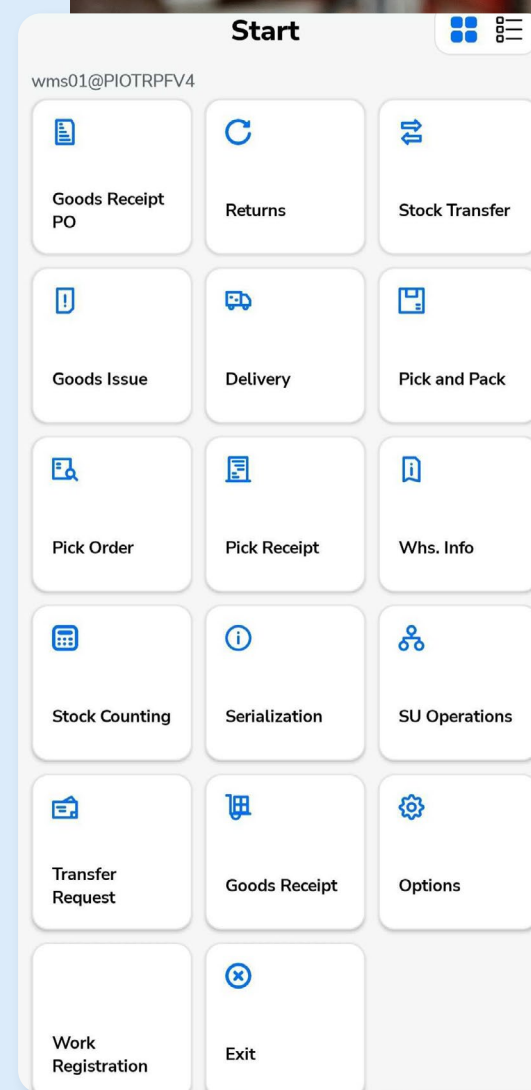
## Accurate Warehouse Management with CompuTec WMS

**Seamless Material Flow:** Orchestrate inbound, outbound, and internal transfer orders with mobile-driven execution. Streamline the Pick & Pack process to ensure the right items reach the right customers every time.

**Global Standards & Aggregation:** Fully compatible with GS1, SSCC, and GTIN. Support for multi-level aggregation, allowing you to track individual items within boxes, and boxes within pallets, with a single SSCC scan.

**Catch Weight Management:** Capture precise weights and units during inbound receipt processing and shipping to ensure accurate billing and inventory valuation.

**Continuous Stock Counting:** Eliminate the need for yearend shutdowns with cycle-counting functionality that keeps your stock levels accurate year-round.



**Rule-Based Labeling:** Take the guesswork out of the warehouse. Define printing rules that are automatically triggered based on the transaction, location, or customer requirements.

## Strategic Outcomes

- Inventory Velocity & Accuracy
- Automate Regulatory Compliance
- Precision Margin Control with Catch Weight Management
- Optimize Fulfillment Cycles



# Reporting & Analytics

Transform raw operational data into a strategic asset. Harness the power of integrated analytics to optimize your processes, understand your margins, and fuel decision making.

## Comprehensive Reporting & Real-Time Monitoring

**Versatile Reporting:** Access your data exactly how you need it. Utilize SAP Crystal Reports and Analytical Pages for deep-dive documentation and flexible data presentation.

**Instant KPIs & Widgets:** Monitor your operational health at a glance. Use customizable dashboard widgets to track Key Performance Indicators (KPIs) in real-time, right from your web browser.

**Actionable Performance Analysis:** Identify scrap, non-conformance and downtime events, allowing management to take immediate corrective action.

**Analysis based AI:** Leverage AI to ask complex questions, without having to create traditional reports.

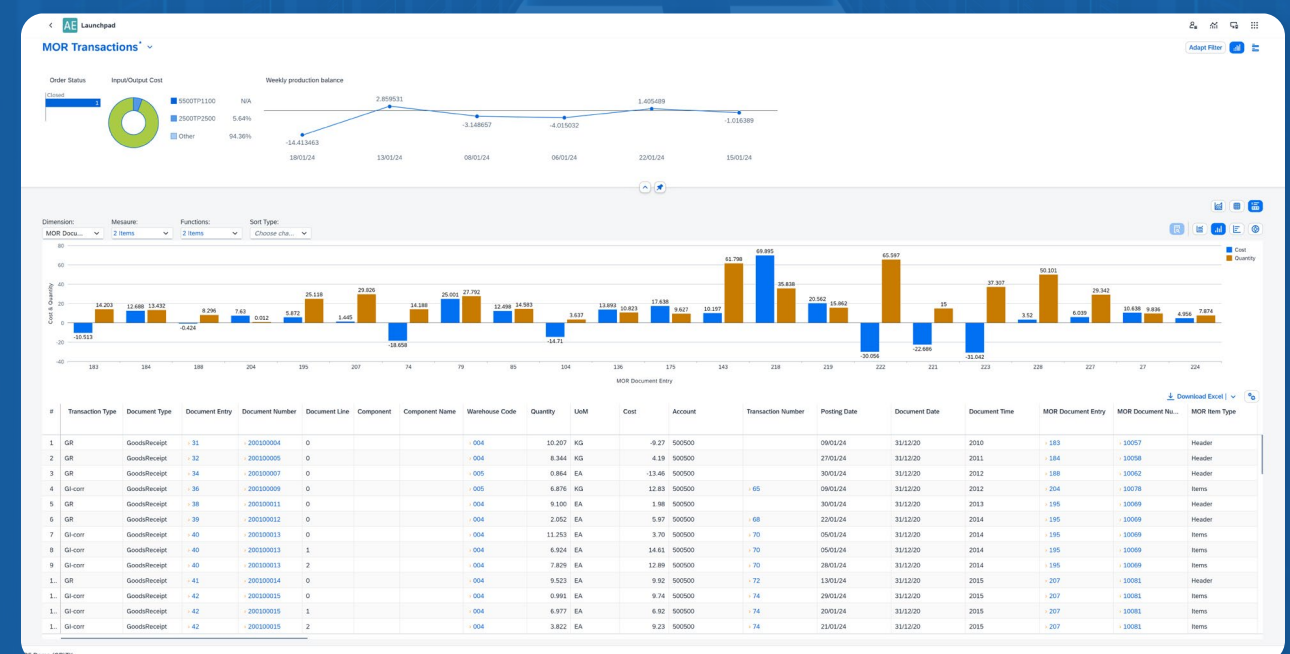
## Strategic Business Intelligence

Advanced Analytics & Strategy

**Deep-Dive Integration:** Connect your manufacturing and logistics data to high-performance platforms like SAP Analytics Cloud and CompuTec AppEngine Analytical Pages for sophisticated, multi-dimensional analysis.

**Data-Driven Strategy:** Use historical and current performance trends to inform capacity planning and validate your investment strategies. Make „big picture” decisions based on hard evidence, not intuition.

**Benchmarking Excellence:** Compare historical performance against current output to visualize your progress and identify the „next step” in your efficiency journey.



# A Platform for Today, Tomorrow and the Future

*Customize, automate, and integrate your enterprise for the AI-driven era.*

**AI-Ready Infrastructure:** Stay ahead of the curve. Our built-in MCP (Model Context Protocol) Server allows you to connect your manufacturing, warehouse and logistics data directly to AI Agents, enabling intelligent assistants and deeper insights.

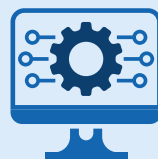
**Custom App Development:** Build SAPUI5 custom applications to meet your unique business use cases and workflows.

**Universal Access & Visibility:** Run your apps within the SAP Business One Desktop Client, Web Client, or any standard web browser.

## Strategic Outcomes:



Future-Proof  
AI Readiness



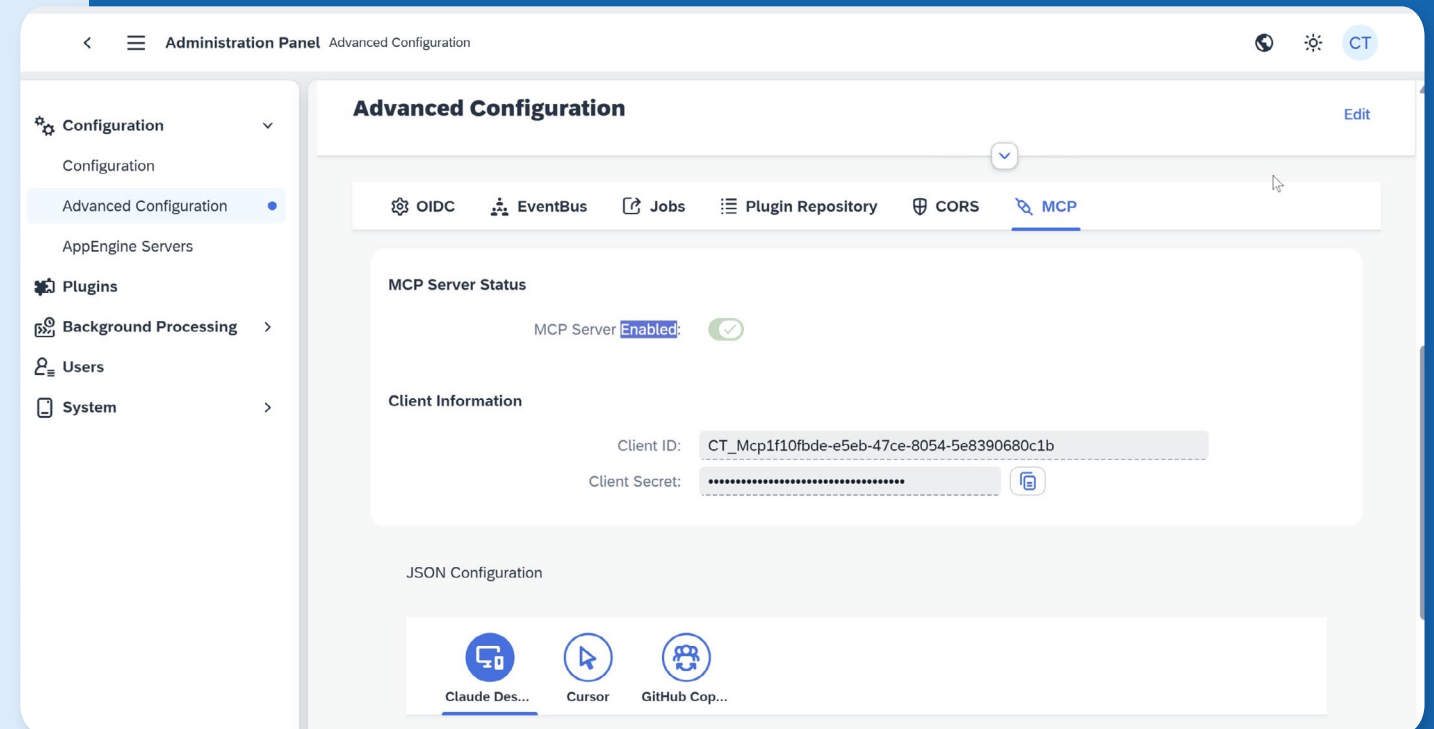
Total Performance  
Transparency



Infinite Process  
Extensibility



Seamless System  
Orchestration



**Automation:** Execute workflows, data processing and scheduled background processing.

**Simplified Integrations:** Help your systems talk to each other. Use CompuTec AppEngine as a robust integration hub to connect internal and external APIs, services, weight scales and machines.

**OpenTelemetry:** Gain deep technical visibility. Monitor system health, performance metrics, and user activity to ensure 24/7 operational stability.



# SAP Business One Web Client Customization & Automation Toolkit

*CompuTec WebUp is a leading customisation and automation toolkit designed to personalize your daily interactions with the SAP Business One Web Client, driving greater productivity.*

## The SAP Business One Web Client. Reimagined by You.

**Total View Mastery:** Reorganize your workspace to show exactly what your team needs to see, and nothing they don't.

**Advanced UI Refinement:** Move standard fields, buttons, and groups with ease. Elevate User-Defined Fields (UDFs) from the bottom of the screen to prominent sections for better data entry.

**Clutter-Free Interfaces:** Simplify forms by hiding unnecessary buttons, fields, or entire sections, reducing user error and training time across any department.

**Validations:** Enforce data integrity with custom validation actions triggered on Add, Update, or Close. Prevent mistakes with personalized popup alerts tailored to your specific business rules.



**JavaScript Automations:** Automate complex workflows from updating field values to creating documents via the Service Layer, triggered instantly by specific view events.

**Smart Actions:** Execute standard or create custom JavaScript actions, to simplify user interactions.

**Seamless Configuration:** Effortlessly move your perfected setups between databases and environments.

### Strategic Outcomes

- Increase User Productivity
- Flexibility as your business changes
- Data Integrity via Business Logic
- Unified Workspaces

# Your Journey to Manufacturing and Logistics Excellence

*A Partnership Built on Results*

Whether you are looking to solve a specific warehouse challenge or increase production visibility, the CompuTec team and our global partner network are ready to help.



## Our Engagement Process

### Step 1: Discovery & Strategy

We start by understanding your unique manufacturing and logistical challenges, from your shop floor constraints to your long-term growth goals.



### Step 2: Solution Architecture

Our experts design a solution architecture aligned with your SAP Business One core.



### Step 3: Implementation

With a focus on data integrity and project methodology we help you transition to your new high-performance environment.



### Step 4: Continuous Innovation

Your system evolves as technology and your business advances.

# Connect With Us

## Discovery Call

Visit our website to schedule a personalized demo and see the CompuTec Solution Suite in action. We will walk you through the solution components that matter most to your industry whether it's Batch Traceability, Scheduling, or Analytics.

## Find a Partner

CompuTec works with a worldwide network of certified SAP Business One partners. We can connect you with a local expert who understands your market and your language.



# CompuTec

**CompuTec Swiebodzin  
(Head Office)**

Sikorskiego 9  
66-200  
Swiebodzin  
Poland

tel/fax +48 68 38 188 00

[www.computec.one](http://www.computec.one)

[info@computec.one](mailto:info@computec.one)

