

www.ontego.one

Ontego
One
BUSINESS PARTNERS



TOTAL CONTROL, RISK FREE

Only pay when your customers use it.

OntegoOne mobile apps check in once per month, when they are used. We are charging only those active mobile devices and you can even limit them.



FULL FLEXIBILITY

Decide your individual pricing.

Whether your customers pay you monthly, one-time or even nothing at all. You decide how you want to integrate OntegoOne in your sales strategy.



JUMP IN AND JUMP OUT

No setup fees. No minimum terms.

We believe in our product. That's why there are no strings attached. You can start and quit anytime you want. Self-served.

19 EUR
monthly per device

PLATFORM REWARDS

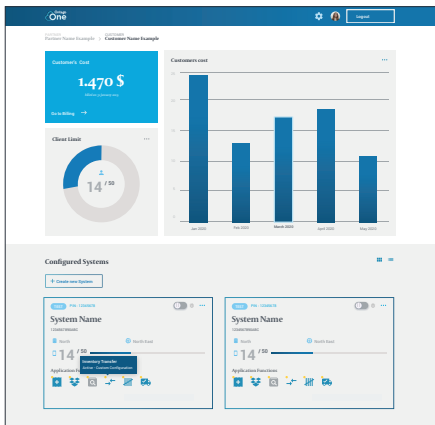
The more business, the less you pay.

Up to 99 mobile devices you pay 35 EUR monthly per device. From 100 up you pay 29 EUR and above 250 devices it's only 19 EUR monthly per device. **For all of them.**

MOBILE APPS FOR WAREHOUSE LOGISTICS

Satisfy your customers needs.

Making business processes faster and less faulty. Mobile apps are empowering workers anywhere and anytime. We provide you with the tools for real end-to-end mobile experience. Perfectly integrated with SAP Business One.



SELF-MANAGED CLOUD COCKPIT

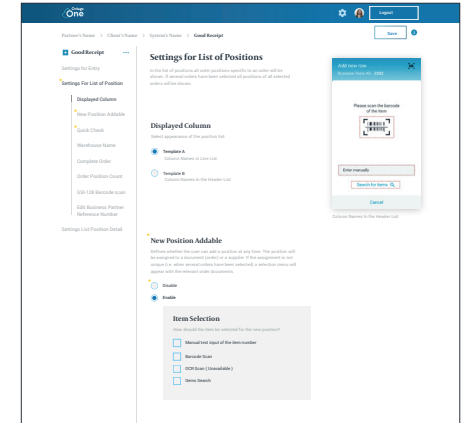
Get control about everything.

Manage your customers B1 systems and keep track of the mobile apps, their configuration and total costs. All self-serviced in the Cloud Cockpit. We don't even need to know your customers name.

CONFIGURATION BASED

Customize apps without any coding.

Don't invent the wheel over recurring customers requirements. Simply change settings. Whether it is table layouts, barcode scanning, entry options or any other SAP Business One specs. We have it all implemented for your convenience.



BEST MOBILE TECHNOLOGY

Benefit from our expertise, focus on yours.

OntegoOne comes with industry-proven mobile user experience. Business Mobility is in our DNA, since 20 years. We take care about things like mobile OS changes, mobile devices and SAP integration. You do what you do best: consulting your customer.